

EEO Progress Report **2016-2017 School Year** *Eleuthera and Harbour Island*

Exceptional Education Outreach (EEO) is a non-profit special education and literacy project that operates in the Bahamian Family Islands. EEO's **mission** is to partner with the Bahamian Ministry of Education to create a sustainable special education program for children across Eleuthera and Harbour Island.

The project's **vision** for Harbour Island and Eleuthera is to ensure that children with special needs have access to innovative educational programs and materials to help them reach their full academic and personal potential. Through collaborations with Bahamian and American educational organizations, EEO strives to equip local teachers, parents, and volunteers with materials and skills to assess students and remediate learning challenges.

[IN THE BAHAMAS:](#)
PO Box EL 27194
Harbour Island, Bahamas
Phone: 242-333-2006

[IN THE US:](#)
650 NE 67 St.
Miami, FL. 33138
Phone: 305 389-7485

Email: EEOBahamas@yahoo.com
www.EEOBahamas.org

[Table of Contents](#)

- A. Goals of EEO
- B. Project History
- C. Professional Assistance
- D. EEO Events During 2012-2013 School Year
- E. Educational Philosophy
- F. Accomplishments at a Glance Up to 2013
- G. Testing
- H. Staff, Seminar Presenters, Therapist Visits, Board Members
- I. Improvement Charts
- J. Support
- K. Expenses for 2015 and Budget for Upcoming School Year
- L. Goals for upcoming year
- M. More fun EEO pictures
- N. 17 Ways to Support EEO for our 17th Anniversary



Students at Harbour Island all age School EEO Resource room sharing reading time.

A. Goals of Exceptional Education Outreach-Eleuthera and Harbour Island

- Assess physical and neurological impairments that may be interfering with a child's academic progress and provide availability for needed continuous care.
- Conduct daily, in-school, special education sessions with special needs children. *These challenges include low cognitive functioning, Pervasive Developmental Delays (PDD), Attention Deficit Hyperactive Disorder (ADHD), learning disabilities, mild to severe retardation, apraxia, severe processing delays, hearing and speech problems.*
- Build local capacity through *monthly training seminars* that integrate literacy-building and teaching strategies for working with children with special needs.
- Establish, equip and maintain special education *resource rooms* across Eleuthera and Harbour Island with books, computers, specialized learning aides and supplies for use in daily pull-out sessions with small groups of students needing individualized instruction.
- Assemble specialized *professional libraries* in each district of Eleuthera to aide in the professional development of parents, teachers, and volunteer community members. These rooms will be complete with professional journals, textbooks, instructional materials and best practice videotapes.
- *Train local community volunteers* to assist with in-school and after-school tutoring sessions, and summer school sessions and assist with needed school supplies and books.
- Initiate an *on-going learning community* in which teachers, parents, and the general public recognizes and consistently addresses the challenges faced by special needs students.
- Collaborate with other non-profits on Eleuthera such as One Eleuthera and Methodist Habitat in implementing long-term strategic plans and for Eleuthera's successful future in education.
- Collaborate with the Bahamian Ministry of Education in creating similar special education programs in other Family islands with offered support of materials, books, therapist visits, assessments and training.

The above efforts (i.e. training, gathering professional resources, establishing a professional network, and providing hands-on assistance) are intended to foster and sustain an independent, student-supportive, special education system in Eleuthera. The ultimate goal of this undertaking is to establish a knowledge-base whereby the responsibility for the education of children with special needs will continue on the local level, while at the same time forging links with stateside resources, on an as-needed basis.

B. Project History

In 1998 under a tree in the yard of Harbour Island, All Age School, a special education and literacy outreach program was implemented by volunteers on Harbour Island. Within the following two years, this program spread to schools in North Eleuthera. Greater community awareness, increasing support from the Bahamian Ministry of Education, and the uncovered critical need, have resulted in the expansion of special education resource rooms reaching to South Eleuthera. EEO has outfitted these rooms within the public schools with specialized books and materials, specific to students with learning challenges. In addition, professional libraries on the island are beginning to be filled with

textbooks, journals, and best practice videos to provide access to the latest information for the local communities.

EEO also recognized the need for professional assistance by doctors and therapists. All students in the EEO program as well as others with possible concerns have their ears tested for hearing deficiencies. Other assessments if needed include neurological evaluations (and EEG if needed), vision screenings, psychological evaluations, testing by Occupational Therapists and Physical Therapists.

In 2000, EEO also started a series of Literacy special education seminars and parent workshops to assist with training local teachers, parents and volunteers. Speakers from Nassau and abroad have visited to share updated strategies for special education and literacy needs of local students in the mainstreamed classes.



EEO has collaborated over the last 17 years with the Bahamian Ministry of Education and Special Education services in Nassau to create a sustainable special education program for the Family Islands.

C. Professional Assistance

Children recommended to the EEO program by school faculty receive hearing screenings. Those children exhibiting problems with these screenings are subsequently seen by a hearing specialist contracted by EEO. If further attention is needed, students are referred to professional medical care in Nassau. EEO has provided assistance, in the form of Fast Ferry tickets, to families who could not afford the trip to Nassau to bring their child to the doctor. Auditory and visual perception assessments continue to be conducted in other settlements down the island.

For those children who have exhibited severe learning and emotional difficulties, EEO has engaged Dr. Barrett and Dr. Edwin Demeritte from Nassau to help assess and identify new strategies for learning and behavior management. Dr. Barrett, child psychologist, has met with students and their parents or guardians, providing them new techniques and perspectives on how to deal with learning and emotional problems. Dr. Demeritte, pediatric neurologist, makes semesterly visits with an interdisciplinary team of specialists. He has provided in depth evaluations (EEG's for some) and professional reports with strategies for teachers and parents for over 50 children in need of critical attention.

There are several children across Eleuthera who experience learning challenges and social anxiety due to speech problem. To further investigate and assist these students, EEO has organized visits from speech therapists Sharon Clarke and Paula Bowleg from Nassau. They provided thorough evaluations and met with parents to provide recommendations and strategies on improving speech problems. In current years, speech therapists Dina Whitaker and Beth Waite have volunteered their services to assist with providing evaluations and follow- up therapies. EEO underwrites 90% of the costs of these visits.



Speech Language Therapist, Dina Whittaker, with EEO student in Hatchet Bay

D. EEO Events and Accomplishments: 2016-2017 School Year

Summer 2016 – EEO meets with Speech Therapists: Dina Whitaker, Beth Waite and Kristi Torres to create long-term program goals for speech therapy needs on Harbour Island and Eleuthera. Dina Whittaker provides EEO staff training at North Eleuthera Primary and Hatchet Bay

Summer 2016 – EEO and Freedom to Read Inc. distribute books to all public schools that host EEO programs and fill up our new Harbour Island Center with more awesome books.

September 2016 – EEO opens 5 centres for 2016-2017 school years.

EEO served 140 students in the following schools:

*North Eleuthera Primary School, Bluff
Harbour Island All Age School Primary
Harbour Island All Age School Secondary
Governors Harbour Primary School
Tarpum Bay Primary School
Center for Exceptional Learners

*(*Founded by EEO in collaboration with Ministry of Education and is now staffed by MOE teachers)*

September 2016 – Speech Therapist, Dina Whitaker, starts off professional development for school year with seminar at Cancer Society Building in Palmetto Point. Over 60 teachers from Eleuthera attend workshop: “Creating an Inclusive Classroom”

January 2017– Team of EO teachers and volunteers conducts hearing screenings at the following schools: Tarpum Bay Primary School, Governors Harbor Primary, Center for the Exceptional Learners, Dunmore Academy, Harbour island all Age school, and North Eleuthera Primary School

January 2017- Part 2 of workshop “How to Create An Inclusive Classroom“ by Dina Whitaker held at North Eleuthera Primary. Teachers from Harbour Island All Age School were provided transportation to attend and over 25 teachers from North districts attended.

February 2017 KelsKids organization conducts After School Literacy and aquatic training programs for EEO centers.

February 2017 – EEO Teacher Workshop at Governor’s Harbour Primary entitled "Say it. Write it. Multi-sensory Strategies to Increase Literacy in Students with Speech and Language Disorders". Presented by Beth Waite. A total of 24 teachers from Eleuthera and Harbour Island attended this Saturday workshop.

February 2017-Hearing screenings continued form non-EEO students in schools across Eleuthera and Harbour Island .

March 2017- Rotary Club Book Fair on Eleuthera. EEO staff and EEO graduates EEO provided "Read Alouds" in small groups to over 200 students that day!

March 2017 –65 EEO students rode a bus all the way from North Eleuthera and Bluff and participated in this year’s "All That Jazz" Festival at Haynes Library in Governor’s Harbour. It was truly an unforgettable experience for EEO students interacting with musicians and instruments.

March 2017 –Seminar “Language and Literacy For All” presented by Beth Waite, Speech pathologist at Tarpum Bay Primary and Hatchet Bay’s PA Gibson Primary School.

March 2017 – EEO silent auction Fundraiser at RitzCarlton residences, Miami Beach

June 2017 – Children supported in EEO classes received certificates for improvement in Literacy at award ceremonies in schools.

June 2017 – Intensive 2 week Literacy camp for EEO students held at Governors Harbor Primary by teachers from Westchester University and EEO staff.

***2016-2017 year: 20 Students mainstreamed.
220 in past 5 Years***



EEO teacher Jennie Charles heading to practice reading skills with a small group of motivated learners from North Eleuthera Primary in Bluff.

E. EEO's Educational Philosophy.

EEO believes that every child deserves the chance to reach his/her personal potential. We strive to build their self-esteem and help children feel motivated to learn. We create opportunities for success with individualized instruction and small group activities. Through multi-sensory, innovative strategies and positive learning experiences, EEO creates a safe environment where they are aware of personal goals and are challenged to improve. Learning is approached in multi-sensory ways and with a multi-modality approach. We incorporate games, music and movement to inspire the students.

Educators and learning theorists agree that when students take ownership of their personal educational goals, their success rates increase. Academic success translates into improved confidence, positive behaviour, and a greater thirst for learning—qualities that will enhance a student's life beyond his school years.

EEO also sees the importance in educating the parents and caregivers. Our visiting therapists and seminar presenters involve and train the parents of the students they work with. Furthermore, EEO holds parent workshops, afterschool sessions and provides tools for continued at-home support.

EEO has seen meaningful changes in our student's motivation and their success in reading. We believe this impact creates positive changes in their communities.



EEO teacher, Sonja Castel, walking with her students to newly built EEO center at Harbour Island All Age School.



F. Accomplishments at a Glance up to 2016-2017 school year:

- EEO underwrites visits by an interdisciplinary team including an audiologist, a paediatric neurologist, a speech therapist, an occupational therapist, a physical therapist and a child psychologist. There have been 14 experts that have volunteered their services to EEO.
- EEO has had special education support established within 11 schools since 2000 and has equipped these resource rooms that EEO teachers work in during the school hours.

EEO served students in the following schools:

- *Gregory Town Primary School*
 - *North Eleuthera Primary School, Bluff*
 - *Harbour Island All Age School (High School and Primary)*
 - *James Cistern Primary School*
 - *Rock Sound Primary School*
 - *Governors Harbour Primary School*
 - *Emma Cooper Primary School (Palmetto Point)*
 - *PA Gibson Primary School (Hatchet Bay)*
 - *Tarpum Bay Primary School*
 - *Weymss Bight Primary School*
 - *Centre for Exceptional Learners, Governors Harbour**
(*Staffed by Ministry of Education)
-
- Since its start, EEO has organized 60 professional seminars with over 250 Ministry of Education teachers attending. The Bahamian Ministry of Education, Eleuthera District endorses these seminars and has mandated a half-day of school for certain EEO's seminars so that all teachers may learn valuable new skills about increasing literacy and special education strategies.
 - EEO sponsored EEO and Ministry of Education teachers to visit Nassau to attend Special Education workshops and visit Academia School as part of professional development efforts.
 - Approximately 1,700 students from all districts of Eleuthera have been given a hearing screening, and audiologist has preformed follow up testing for over 80 students with hearing loss, three hearing aides have been donated and medical procedures to help hearing problems have been underwritten by EEO. Upon recommendations of teachers and parents, 200 students have been given a vision screening.
 - Parent workshops have been conducted in all three districts of Eleuthera with over 200 parents having attended. EEO representatives also make monthly presentations at school PTA meetings. Transportation is provided through EEO from the settlements in the Central and South of Eleuthera.
 - EEO After School Programs existed for over 100 students of Harbour Island All Age School and Governor's Harbour Primary communities
 - For community awareness, EEO distributes a newsletter to all settlements in Eleuthera. EEO has been featured in Nassau Guardian and the Eleutheran. Two local websites that have also featured write ups around EEO activities.
 - EEO collaborates with the Bahamian Ministry of Education in establishing similar programs in other Family Islands. EEO is committed to assisting with the development of the first special education system for the Family Islands and creating sustainable programs for the future.
 - Intensive Spring/Summer Programs by educators from the Stephen Gaynor School, New York City and therapists visited since 2011 at Hatchet Bay Primary and Governors Harbour Primary.
 - Since 2009, EEO has updated and maintained an On-Line Training Campus to build local capacity and connect special education efforts to other Family Islands. EEO incorporates

videos and information from all of our guest speakers and offers free access to teachers and volunteers. *Professional development credit is recognized.*

[G. Testing](#)

EEO performs assessments from time-tested sources to identify specific skill gaps in a child's learning. Recognizing that there are various learning styles, EEO structures Individual Education Plans (IEPs) and learning activities to meet the individual needs of each child.

Students in the EEO program have been tested using the following screenings:

Dolch Assessment

Wepman Auditory Discrimination

Audiogram Screening

Slosson Oral Reading Test

Eckwell Shanker Reading Assessment (in depth diagnostic phonemic awareness and phonics assessment)



Hearing screenings are a valuable component of EEO's programs. Undetected hearing losses can lead to plummeting self-esteem, motivation and academic failure. EEO underwrites Audiologist follow-up visits, ENT appointments and has found funding for many hearing aides.

H. EEO Staff, Seminar Presenters, Therapist Visits, Board Members



EEO staff (minus Gaby Hudson)

- Mrs. Lang Hudepohl, EEO Founder and Executive Director
- Mrs. Gabriella Hudson, EEO Co-Director
- Mrs. Joann Cambridge, EEO Teacher- Tarpum Bay Primary
- Ms. Maureen Keogh, EEO Teacher- Governors Harbour Primary School
- Mrs. Kathy Brown, EEO Teacher - Harbour Island All Age Secondary School
- Ms. Jennie Charles, EEO Teacher- Harbour Island All Age School and North Eleuthera Primary
- Ms. Sonja Castel , EEO Teacher – Harbour Island All Age Primary School

Other Visiting Volunteers:

- Shannon Fastzkie, Sharon and David Jacobs worked in combined effort to assist Alexia Johnson, a deaf student, in the acclimation to cochlear implant.
- Miri Tusing assisted with Dina Whitaker’s Speech and Language evaluations.
- Benita Etienne, a former EEO student reads with students in After School program at HIAAS and assists with school wide hearing assessments in Central Eleuthera High school
- Ella Griffith and her family brought books and read to students at Harbour Island EEO center
- Sandra Sainvill assisted EEO in conducting hearing screenings.

Seminar Presenters

The following individuals were participants in the seminar series hosted by Exceptional Education Outreach. Teachers attend seminars across Eleuthera and Harbour Island as well as interested community members. Often Parent Workshops are also hosted in conjunction with their visit.

To integrate the special education outreach to other Family Islands, EEO also covers airfare for special educators in other Family Islands to attend.

- Mrs. Beth Waite, Speech Language Pathologist
- Mrs. Dina Whittaker, Speech language Pathologist
- Dr. Judith Gold, Project LEARNS, Bank Street College, NY
- Roxane Contreras , MindUP Trainer, Miami, FL

- Ms. Emily DeLiddo, Teachers College, Columbia University, NY
- Ms. Julia Borders, Stephen Gaynor School, NY
- Ms. Alex Bermel , Stephen Gaynor School, NY
- Ms. Asti Spentelli, Stephen Gaynor School, NY
- Mrs. Nancy Hudepohl, Bilingual Education PHD, San Antonio, Texas
- Dr. Marion Crayton, Special Ed. Coordinator, St. George’s County, MD
- Dr. Jodi Marshall, Reading Specialist, University of Miami
- Dr. Sharon Kossacks, Professor, Florida International University
- Dr. Judy Cohen, Elementary Education Professor, Florida International University
- Dr. Timothy Barrett, Child Psychologist, Nassau
- Dr. Wavell, Psychologist, Nassau
- Mrs. Gail Wisdom, Director, Academia School, Nassau
- Mr. Blair Cochran, Literacy Program Coordinator, Dade County Public Schools
- Mrs. Carolyn Rasmussen, Pearson Learning Group, Florida
- Ms. Jennifer Alexiou, Speech therapist, Nassau
- Mr. William Holland, Special Educator, Eleuthera
- Dr. Alison Shook, Reading Specialist, University of Miami, Florida
- Ms. Lang Fincher, Special Educator, Harbour Island
- Dr. Demeritte, Pediatric Neurologist, Nassau
- Mrs. Susy Siel, Librarian /Media Specialist, Wisconsin
- Dr. Sharon Clarke, Speech Therapist, Nassau
- Dr. Paula Bowleg, Speech Therapist , Nassau
- Dr. Tiffany North, Reading Specialist, Nova University, FL
- Dr. Claire Verden, Special Education Department Head, Westchester University, PA

Visiting Medical Professionals

These professionals have performed evaluations on several students in the EEO program who require additional medical assessment beyond who EEO clinicians can do. Initial consultations have been followed up with recommendations and additional visits to assess progress.

EEO Board Members

Mrs. Tanya Melich Crone
 Ms. Emily DeLiddo
 Mrs. Gretchen Jackson
 Mrs. Lang Hudepohl
 Ms. Karla Cosgriff

Mrs. Elizabeth Easton-Montes
 Mr. William Simmons
 Mrs. Gabriella Hudson
 Ms. Jane Fincher
 Mrs. Melissa Sellars

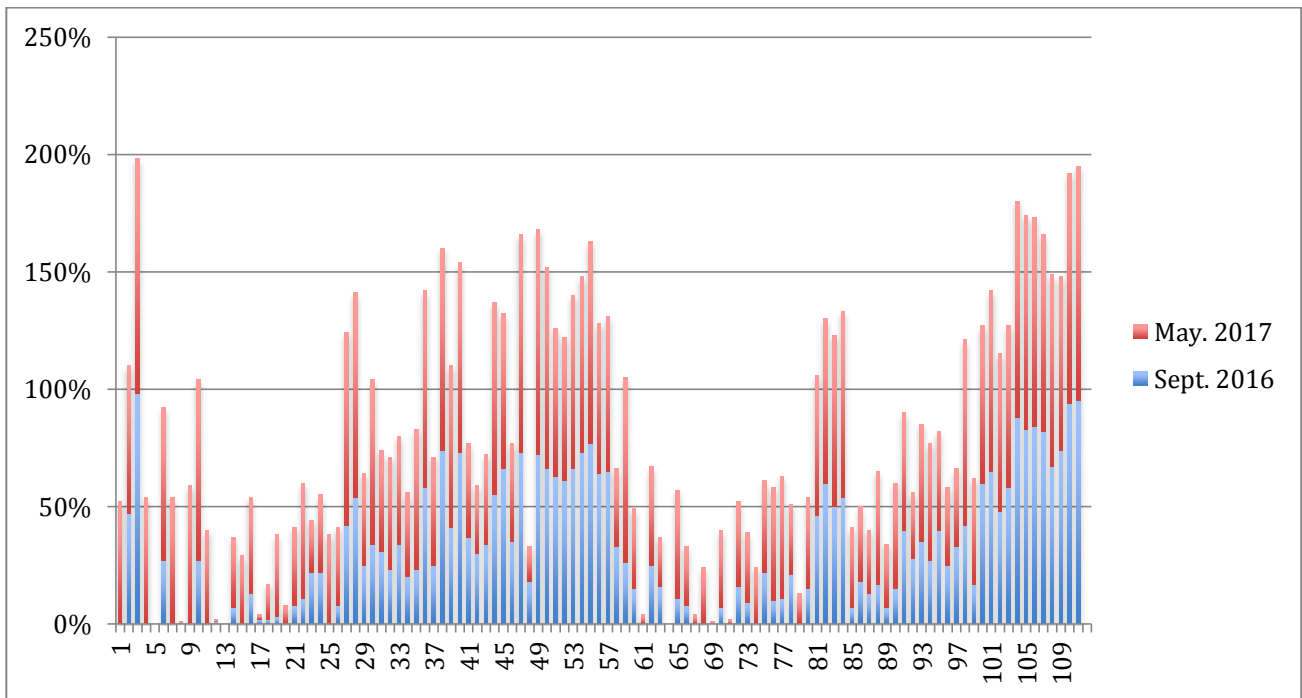


EEO student with proud smile at her 2016 graduation

I. Improvement Chart:

This chart indicates the progress made individual children in the EEO program. The names are not indicated but each set of before and after lines (red and blue) represent an individual child's progress. The scores reflect, in percentages, each child's mastery level of the Echwall Shanker Reading Assessment.

Not all children were represented because this is a reading assessment that is not applicable to the more severely delayed EEO students. Those children with more severe impairments that were not applicable for this assessment have been given more in depth assessments by members of the interdisciplinary team (Pediatric neurologist, speech therapist, occupational therapist).



J. Donors 2016-2017

Founder's Circle

*Howard and Martha Simpson
Samara Fund
The Muir House Foundation
Ella George Children's
Foundation
Tanya and John Crone
Drexler Family Foundation
Miller Family
Claudia and Michael Taglich
Don and Michele Soffer
Windermere Island Foundation*

Edgar Seligman
Lisa Arvin
Lisa and Jeff Akin
Thomas and Rebecca Jelke
Augustin Diaz
Pablo Conde
Ana and Derek Bond
Cristina and Christopher Bruan
German and Sylvia Montoya
Barbara Daly
Kate and Mark Ingraham
Matthew and Melissa Hege
Ana Mc Nally
Ann Helmus
Katcher Family Foundation
Diane Kent
Alexander Dombrowsky
Jason Hudepohl
Luis Gonzalez
Melissa Maggard
Lisa Ellis
Joel and Rita Cohen
Erin Pena
Jane Fincher
Charles Lang
Julie Huntsberry

Pamela Howard Foundation
Mark Ingraham
James and Louise Sollins
Tom Scheerer
Elizabeth Derrik
Marina Krim
Craig Thomas
Terrance Winter
Becker Sisters Fund
Uilhein Family
Terrance Winter
Florence Beldock
John Gasdaska
Laurence Mitchell
Jeffery Rothstein
Melanie Spear
Ann Lenane Cutbill
Margret Reigal
Cole Sholtz
Sam Weiner
Goodwin Family
Garner Foundation
Randi Wolfson
Mary Fawkes
Roselyn Drake
Craig Thomas
Eleuthera Vacation Rentals
Megan Jones
Laurence Mitchell
Benjamin Lubik
Erica Gerstin
Louise Phillips
Cabrera Family
Ron Moorman
Ariel Reines
Howard Weshcler
Sherri Lindsey
Angela Clofine
Daniel Gelfman
Linda Matthews
Barbara Daly

In-Kind Contributors:

*Aztec Airways
Jet Blue
Stephen Rodriquez
Jane and Stuart Warren
Fast Ferry
Drunken Dragon
Emily DeLiddo
Susy Siel –Freedom to Read Inc.
Melissa and Rainey Sellars
George Roberts Library
Lionheart Capital
Ritz-Carlton Residences
Coral Sands
Ocean Tally
Dunmore rentals
Daniel Caldwell
Carl Juste
Sip Sip
Chad and Illona Oppenheim
Shine
Jamie Jones
Ahana Yoga
Jo Ann Mathieu
Dakes Shop
Michele King Soffer
Mark and Kate Ingraham
Alicia and Matt Fox
Casa Tua
Donna DeCosta
Tjsa Owen
Ken Stubbs
Causurina McKinney
Michel Bernstein
Mario Leon
Coral Sands
Karla Cosgriff
Barbara DeVries
Yossi Bibas
Elliot Rolle*

K. Budget for upcoming School Year

Costs of each EEO Resource Room established within a Bahamian public school

(For operation 5 days a week~ 1 complete school year)

Educational Materials ----- (school supplies, learning games, computer learning programs, books, workbooks, and photocopies)	\$2,000
Center Maintenance ----- (paint, cleaning equipment, decorations, and repair)	\$ 500
Teacher stipend ----- \$50 a day x 9 months/one school year (covers basic cost of living, utilities):	\$11,000
Transportation ----- (gas, reimbursements, water taxis, rental cars, taxis, airfare)	\$3,000
Seminars/Parents workshops/Professional Development ----- (teacher training seminars and parent workshop supplies/transportation costs)	\$3,000
Therapist Visits ----- (This includes travel of therapist, reduced fees for evaluations or follow-up visits for average of 10 students per center/school for students in need of more in-depth assessments and therapy for speech, physical or neurological impairments.)	\$2, 800
Classroom nutrition ----- (water, fruit snack)	\$700
Administration Costs ----- (accounting, office supplies, IRS dues,)	\$2,000
	Yearly Total: \$25,000
	Total for 5 centers: \$150,000

2015-2016 Expenses

2016-2017 are still in process, please contact EEO Director Lang Hudepohl at EEOBahamas@yahoo.com for more updated information.

Transportation:	
maintenance/gas/taxis	5,690.35
Bank Charges	1,014.21
Business Expenses: Business	
Registration Fees	70.00
Contract Services: Accounting Fees	2,450.34
Functional Expenses: Utilities	868.44
Interest Expense	588.83
Staff /Professional development	1,356.68
Office Expenses	965.38
Operations: Telephone, Telecommunications	927.58
Other Types of Expenses: Other Costs	258.75
Living expense stipends for 6 volunteer teachers	49,115.00
Program Expenses:	
Seminars/therapist	12,113.63
School Supplies/ books/ import duty	8,456.22
Travel and Meetings: therapists	3,369.66
Travel and Meetings: Seminar	2,081.12
Building and improvements	23,012.89
Repairs and maintenance	1,166.99
Educational workshops (student activity)	580.00
Student nutrition	400.00
TOTAL	117,304.08
In-kind contribution	4,800
Contributions	143,300

L. Our 2016-17 goals include:

- Continued auditory and visual testing of students across all 3 districts of Eleuthera.
- Speech therapist visits with training for teachers every quarter of school year
- Return of high calibre seminar presenters to build differentiated instruction skills of teachers for mainstreamed students
- Continued collaboration with other local educational organizations to create joint efforts across multiple age groups toward academic and artistic pursuits.
- Increased parent workshops and incentives to drive participation and engagement at home.
- Integration of technology into EEO centres with individualized programs focusing on Learning Disabilities
- More EEO awareness raising opportunities for communities of Eleuthera.

M. More EEO pictures to inspire...

Examples of the interconnected generous people that want to make a difference on Harbour Island and Eleuthera. So many generous hearts come together to make EEO's programs thrive.



EEO Directors Gaby and Lang unloading pallets of books with Susy Siel from Freedom to Read Inc. on Eleuthera to distribute to EEO centers.



Mainstreamed EEO students received certificates of progress and books as gifts at the Harbour Island All Age closing ceremony



EEO students 3rd year of participating in the All That Jazz Festival. There were 45 children bused from as far North Eleuthera as Bluff for this rich experience!



Griffin family from Ella George Children's Foundation visiting the EEO center at Harbour Island that they helped build! (Photo with EEO teacher Sonja Castel)



Speech Therapist Beth Waite providing on-site professional development with teachers and students from PA Gibson Primary. Across the week prior to her seminar at Governors Harbor Primary she modeled strategies and got to know the school community.



Kathy Brown, EEO High School teacher at HIAAS, with students at the Rotary Book Fair.



EEO partners with Kels Kids for After- School water safety and literacy-infused, fun outdoor activities.



EEO Founder Lang Hudepohl visiting with EEO graduates and the dynamic, motivated Governors Harbor Primary principal, Mrs. MacPhee Pinder to create meaningful goals for the upcoming school year.



Our new EEO baby Elizabeth with EEO Director Gaby Hudson and Daddy/ Harbour Island Library Head, Valentino Hudson. Baby ZZ has been born into a book loving family.



Luckily our supporters take initiative at an early age. Lemonade and cookies to raise funds on Bay Street.



Stateside support for EEO with memorable evening at the Ritz-Carlton's new residence on Miami Beach. Amongst all the generous support we received through silent auction items and in-kind donations, EEO received 100% of the funds. Pictured above Co-host Michele King Soffer, EEO Founding Director Lang Hudephl and Lionheart Capital Principal Alison Greenfield.



India Hicks
LONDON-HARBOUR ISLAND

GET TOGETHER. GIVE TOGETHER.

to support

Exceptional Education Outreach

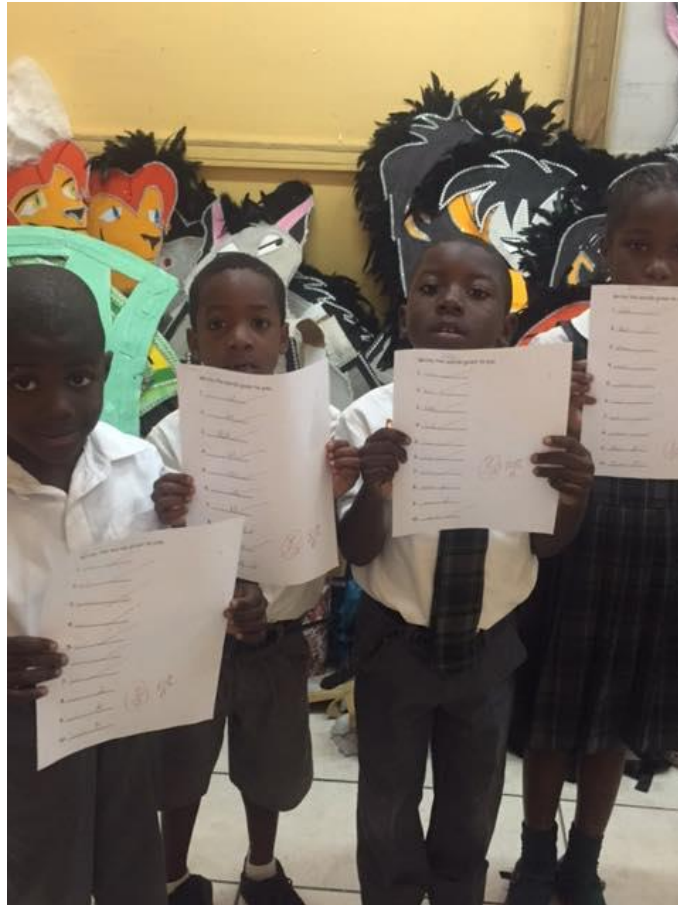
Join Us & India
TONIGHT | July Thirteenth
6:30

Shop | Drink | Dance
Support EEO
the more the merrier xxAlicia & Lang

A fun evening on Harbour Island of shopping and cocktails at Da Vine hosted by Alicia Fox



EEO Students excited over new books at Harbour Island all Age School EEO resource room



EEO students from Tarpum Bay Primary proudly displaying their spelling tests. Collaborating with the student's mainstreamed teachers, EEO strives to build confidence and motivate struggling learners to reach their potential.



Speech therapists Dina Whittaker and Miri Tusing returned for follow-up visits with previously evaluated students. Trainings for parents, teachers and caregivers are integrated with each stay.



*EEO graduates in their communities now.
Left: Working at North Eleuthera Airport and Right: Proud pilot*



Starting the day with a smile at North Eleuthera Primary School



EEO Students working together on word-making phonics skills. EEO uses multi-sensory games and activities that incorporate movement and music to motivate struggling learners and to encompass all learning styles.

make a difference
in the world.

17 Ways to Support EEO For Our 17th Year Anniversary

- 1 Sponsor a specific school's EEO center (\$25,000 a year)
- 2 Join our Founders' Circle sustaining EEO's programs (\$10,000)
- 3 Donate your appreciated stocks at year's end through EEO's brokerage account (*contact EEO Director, Lang Hudepohl at EEOBahamas@yahoo.com*)
- 4 Sponsor therapist visits for a year (\$5,000)
- 5 Sponsor two students' annual services (\$2,500)
- 6 Make a teacher training seminar happen! (\$2,000)
- 7 Donate a vehicle for transporting educators/therapists across long Eleuthera!
- 8 Support students in need of therapist services by underwriting a one-time visit (\$1,000)
- 9 Send us your refurbished used laptops or tablets. They are a great classroom tool!
- 10 Visit [Amazon.com](https://www.amazon.com) and search for "EEO Wish List" and help donate books/supplies
- 11 When ordering your own holiday gifts with [Amazon.com](https://www.amazon.com), consider selecting purchases through AmazonSmile ([smile.amazon.com](https://www.smile.amazon.com)) to benefit *Exceptional Education Outreach* where a percentage of purchase automatically is donated to EEO
- 12 Tell a friend about EEO and sign them up for our newsletter by sending their email address to EEOBahamas@yahoo.com
- 13 Share our information with friends and colleagues who may have foundations that fund and support educational programs or put them in touch with Lang at EEOBahamas@yahoo.com
- 14 Help connect us to therapists willing to donate their services
- 15 Host an EEO Awareness Raising cocktail party for questions and information session with EEO Director
- 16 Come read a book to our students in our after-school program and see what Exceptional Education Outreach is at its very best!
- 17 Donate proceeds of used car sale to EEO for tax write-off

Please contact EEO Director, Lang Hudepohl at EEOBahamas@yahoo.com with any questions or if you would like to be a part of making a difference.

THANK YOU!